



The first and only
integrated **spare parts
management solution**

AI in Spare Parts Management

“

*Spare Parts Management
is easy*

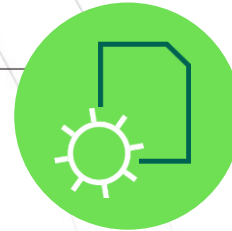
”

No one, ever...

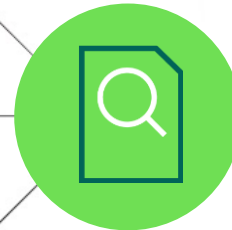
The Challenges of Spare Parts Management

- Supply chain uncertainties
- Unpredictable demand
- Low quality data
- Manual data entry and management
- Hidden Obsolescence
- Hidden Duplicates

Where AI can help



Data capture



Prediction



Recommendation

AI for Data Capture



Recommended Data

Description

Insulated blade receptacle

Manufacturer

Interchange Tools

Manufacturer Part Nr.

180897

Model

ICIQ268FHVI

EAN

8014212201191

Dimensions

6,3x0,8 mm

Cross Section

1,5..2,5 mm²

Material

Brass



Recommended Data

Description

Outlet filter

Manufacturer

RITTAL

Model

SK3326 207

"Hi Sparrow, take a note:

Material number **4521245** is **super important**.

Last time we missed it, the entire HVAC system had to be shut down and it cost us **2 days of downtime**. It took our supplier **6 weeks to send** one over. We were lucky that **material 0163413** at our sister plant in **Birmingham** is a **duplicate**."

AI for Data Capture



"Got it, updating our records:

Material: 4521245

Criticality: 1

Lead time: 6 weeks

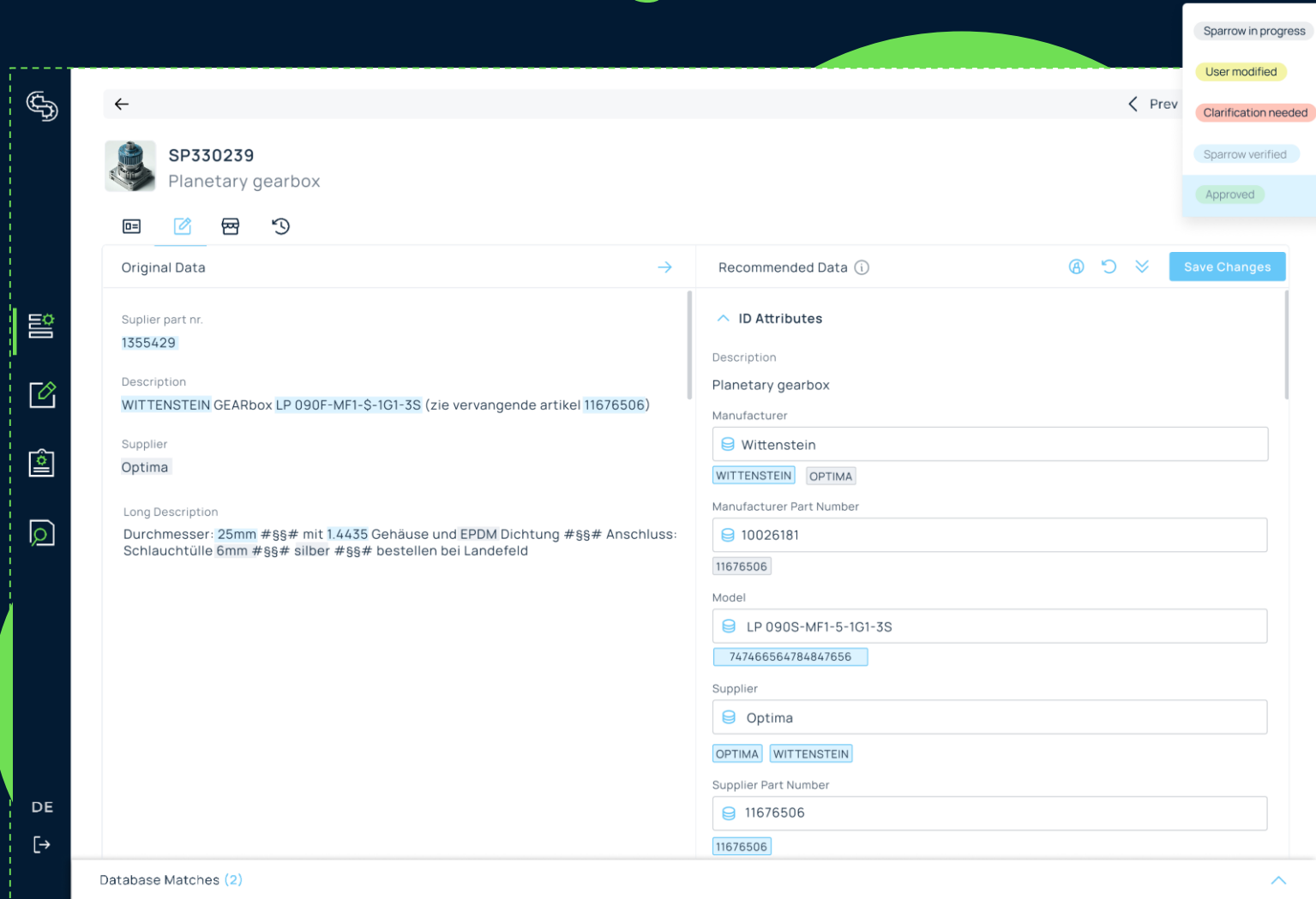
Duplicate part: 0163413

Recalculating planning based on input:

Reorder point: 3

Safety stock: 2"

AI for Data Cleaning



SP330239
Planetary gearbox

Original Data → Recommended Data ⓘ Save Changes

Supplier part nr.
1355429

Description
WITTENSTEIN GEARbox LP 090F-MF1-S-1G1-3S (zie vervangende artikel 11676506)

Supplier
Optima

Long Description
Durchmesser: 25mm #§§# mit 1.4435 Gehäuse und EPDM Dichtung #§§# Anschluss: Schlauchtülle 6mm #§§# silber #§§# bestellen bei Landefeld

ID Attributes

Description
Planetary gearbox

Manufacturer
Wittenstein

Manufacturer Part Number
10026181

Model
LP 090S-MF1-5-1G1-3S

Supplier
Optima

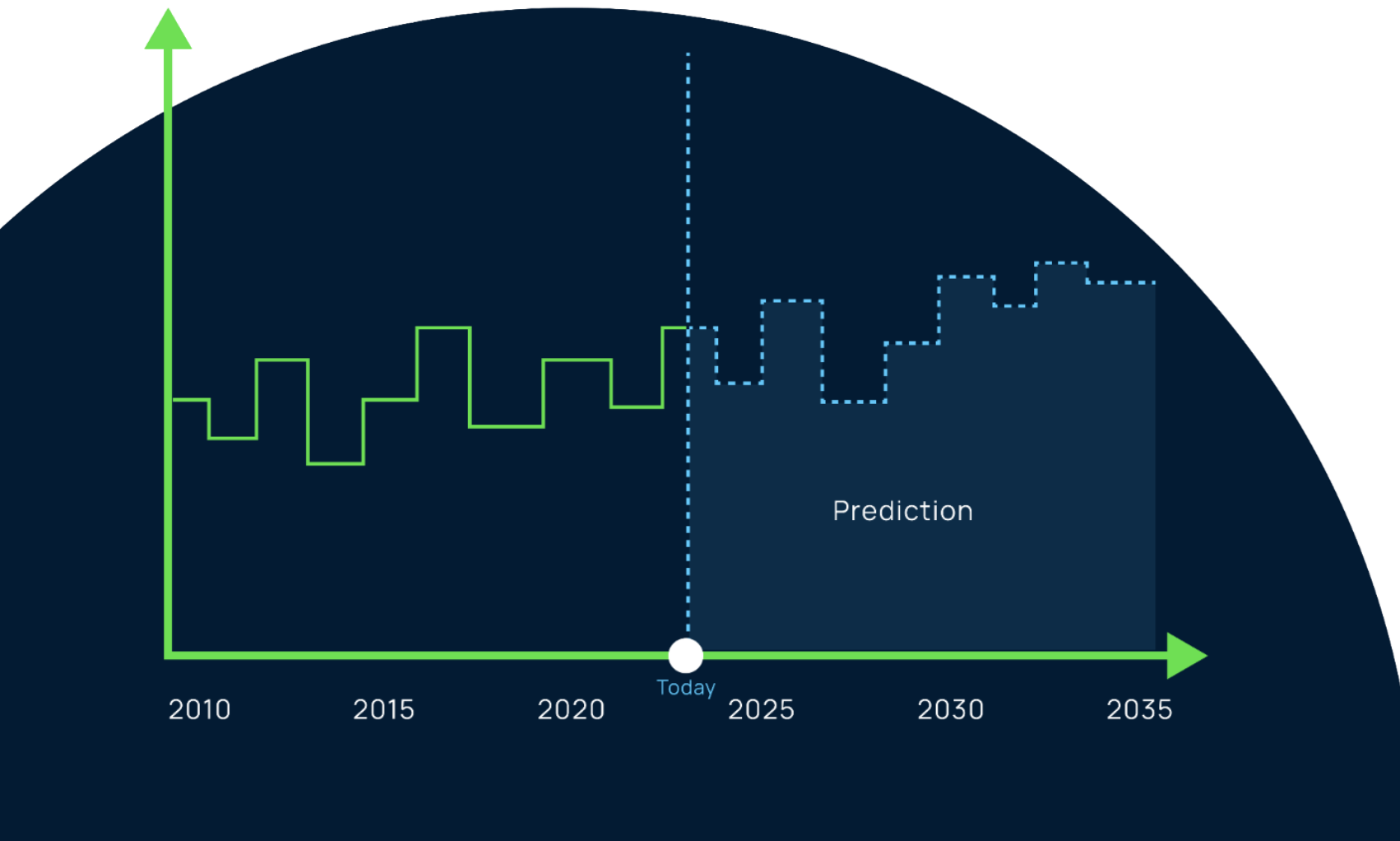
Supplier Part Number
11676506

Database Matches (2)

Sparrow in progress
User modified
Clarification needed
Sparrow verified
Approved

- Large Language Models can extract meaningful information from freetext
- Matching with manufacturer and supplier catalogs

AI for spare parts prediction

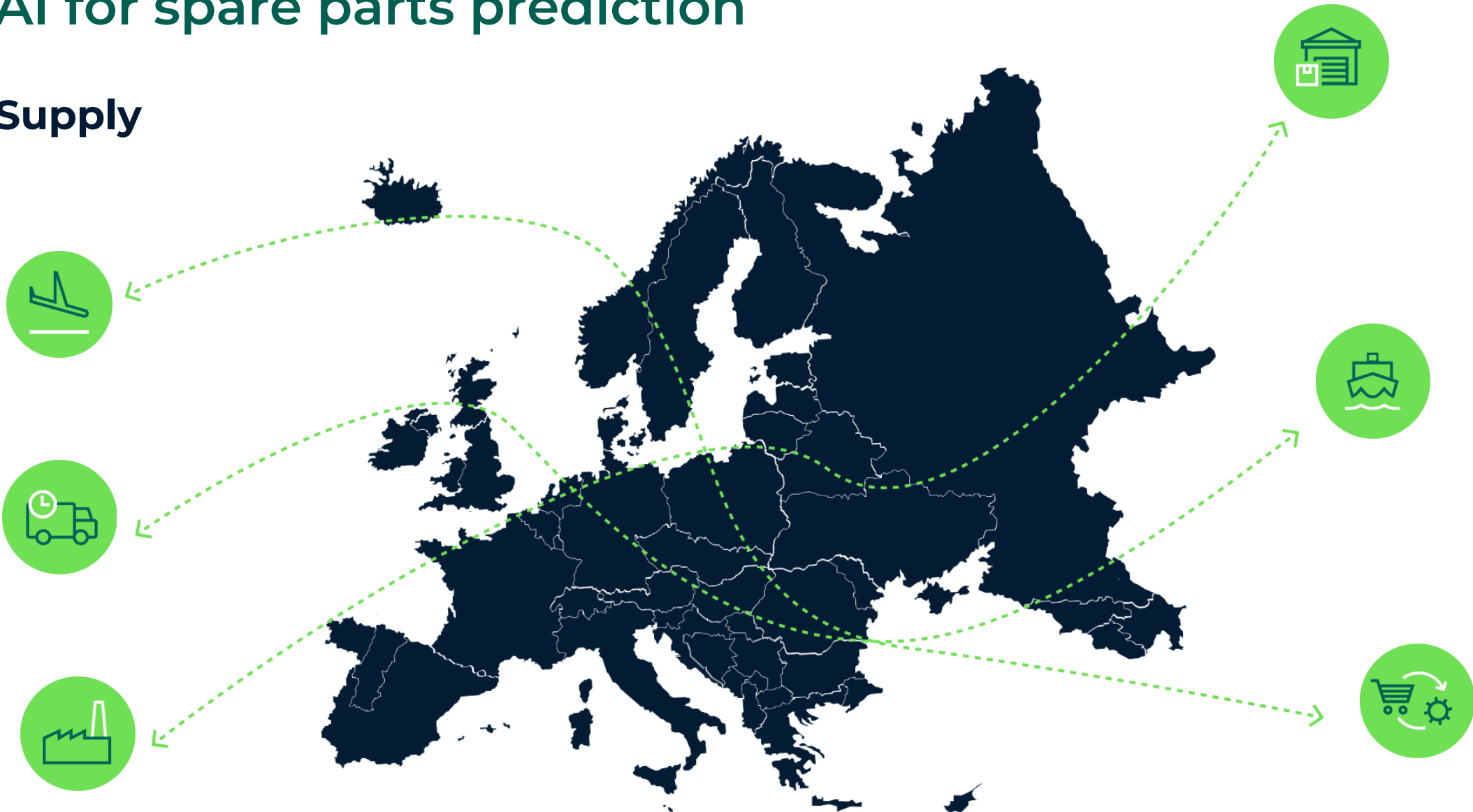


Demand

- Part type failure patterns
- Historic usage analysis
- Application on own install base

AI for spare parts prediction

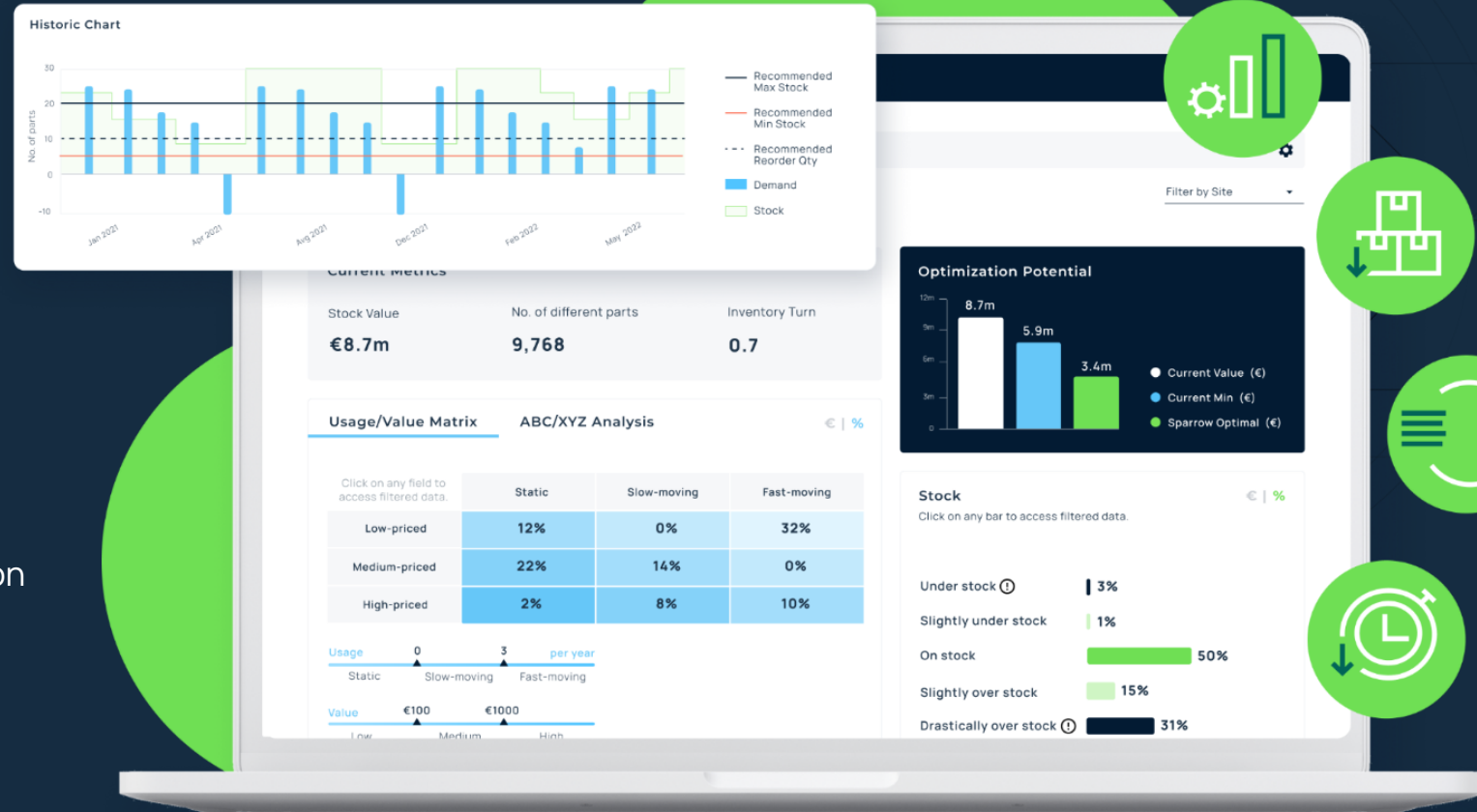
Supply



AI Based Recommendation: Spare Parts Co Pilot



The app works for the planner in the warehouse and the strategic planner reviewing trends across the organization

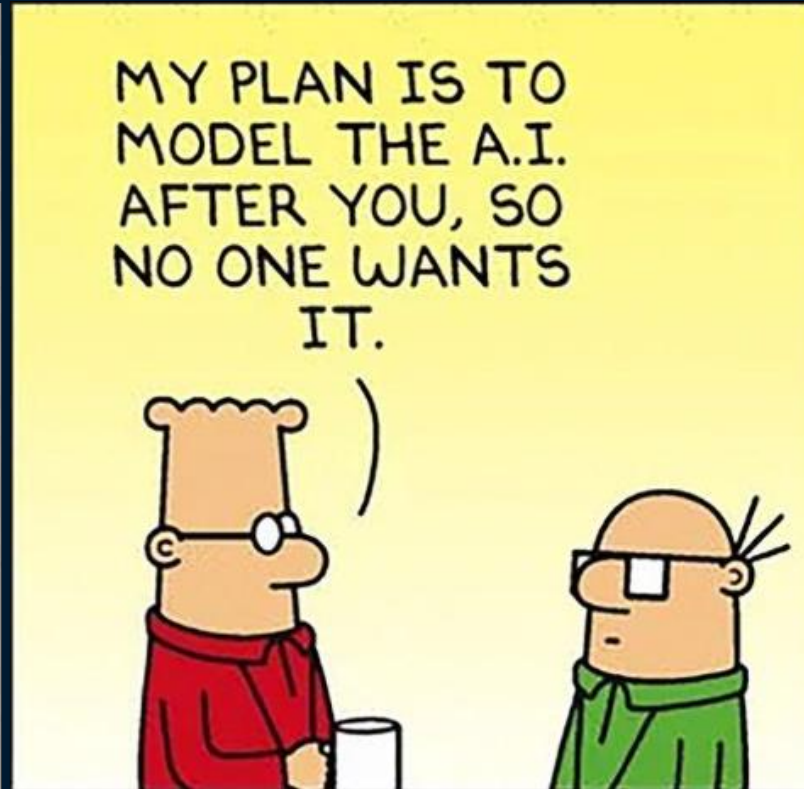


The Future of Spare Parts Management

Rolling out AI



DILBERT.COM @SCOTTADAMSSAYS



11-2-22 2022 Scott Adams, Inc./Dist. by Andrews McMeel





Conclusion and Q&A



VP of Sales

Torsten Gruenzig

+49 (0) 151 2214 1290

torsten.gruenzig@sparrow.parts